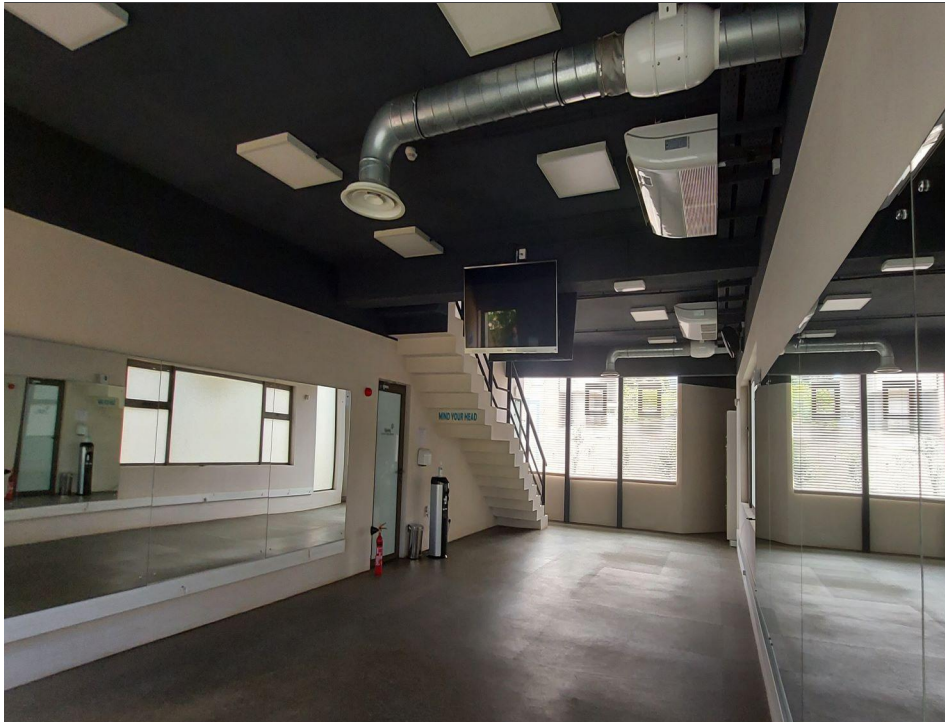


The perfect fit

MUR 22,500,000

Beds: 0 | **Baths: 0** | **Interior: 600 m²** | **Exterior: 752 m²**



Listing type: For Sale Built

| Property type: House

Locality: Coromandel

| Region: Centre

| Property ID: RS1340

Description

Constructed in 2019 in the heart of Coromandel, this commercial/office building benefits from a nice location. It was designed with a unique touch, being well equipped with modern infrastructures.

Inside, the 2-storey property of 600m² is very spacious and can be converted into a call center, a medical consultation office, a logistics company, and so much more. Well equipped with sensor doors, you will have air conditioning throughout the building, carbon dioxide detectors and vents, a sound system throughout the building, screens, and TVs for prompt communications and intercoms.

The building has 7 toilets and 3 shower rooms with sensor taps and hand dryers. It is accessible easily and has a nice garden, with a cafeteria infrastructure already in place.

12 parking spaces are available in front of the building.

Contact us for a visit.

...

[VIEW ON SIR.MU](#)



Nazly Edoo

Real Estate Professional

info@sir.mu

+230 57299847

Mauritius Sotheby's International Realty

© 2024 Sotheby's International Realty Affiliates LLC. All rights reserved. Sotheby's International Realty® and the Sotheby's International Realty Logo [additional marks may be included here] are service marks licensed to Sotheby's International Realty Affiliates LLC and used with permission. Sotheby's International Realty Affiliates LLC fully supports the principles of the Fair Housing Act and the Equal Opportunity Act. Each office is independently owned and operated.